

# MASTER MAC2000 Pty Ltd

## INDUSTRIAL AUTOMATION

Monday: 7:30 AM - 5:30 PM  
 Tuesday: 7:30 AM - 5:30 PM  
 Wednesday: 7:30 AM - 5:30 PM  
 Thursday: 7:30 AM - 5:30 PM  
 Friday: 7:30 AM - 5:30 PM

We also have 24-hour emergency break-down service available.


OR you can contact our office and workshop using the following details:

Master Mac 2000 P/L

19 Lensworth Street  
 Coopers Plains QLD 4108

 (07) 3344 4711

 (07) 3344 5244

 [enquiries@mastermac2000.com.au](mailto:enquiries@mastermac2000.com.au)

**Lucky Ducky #1**



**Would you like to save money on  
 your next order with us?\***



Locate all of the Mastermac "Lucky Ducky's" hidden throughout this brochure - contact one of our staff with the total number you have found! Correct answers will receive an exclusive discount! This is the first one!

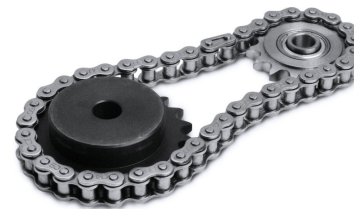
\* Limit of one discount applies per customer. Mastermac 2000 PTY LTD retains the right to determine the discount amount. Offer expires Jan 01 2019

# MASTER MAC2000 Pty Ltd

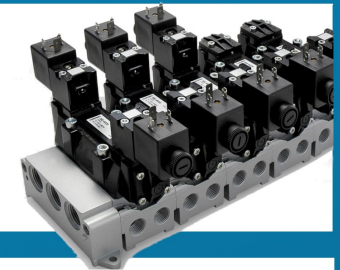
## INDUSTRIAL AUTOMATION



**1 Sales**



**2 Service**

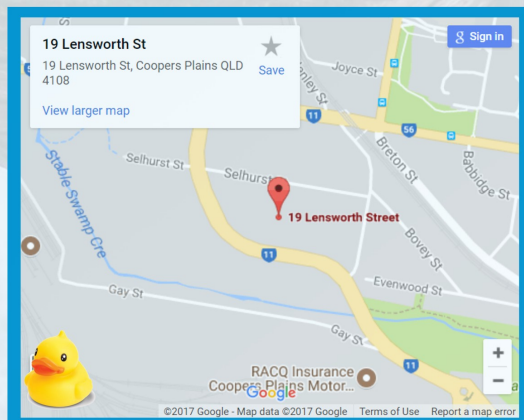


**3 Design**



**PHONE 07 3344 4711**

# About us



Master Mac 2000 P/L was established in 1989 and has grown to become one of Australia's largest privately owned pneumatic distributors and providers of industrial automation solutions.

With Quality brands such as Univer, Mack, Tolomatic, Mac, Piab, American, Rotoflux and much more stocked in Brisbane, Master Mac 2000 P/L is sure to have a solution for you.

Master Mac 2000 P/L services Queensland and Northern New South Wales for any of your industrial automation equipment needs.

24 hour 7 days a week breakdown support is only a phone call away.

Here at Master Mac 2000 P/L we are proud to not only stock quality parts but also provide an excellent sourcing facility for those 'hard-to-get' parts.

A comprehensive data base and a multitude of contacts both around the world and throughout Australia means finding the parts you need is as simple as a phone call to one of our highly trained and professional sales team members.



[HTTP://WWW.MASTERMAC2000.COM.AU](http://www.mastermac2000.com.au)



## Consumables, tools and storage



**Fasteners**  
Nuts, bolts, washers, screws



**Power tools**



**Hand tools**  
Abrasives  
Workshop supplies  
PPE



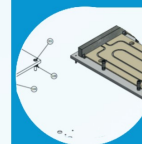
**Toolboxes, workshop benches**  
Compartment storage



**Adhesives, sealants**



**Grease**  
Oils  
Lubrication



## Design & Fabrication

From conception to commissioning- our technical team can assist with all aspects of your application.

With fabrication facilities we can customise a tailor made solution.

Looking at continuous improvement? Want to increase productivity? From redesigning existing infrastructure to a complete turn key package... WE CAN HELP



## Inventory management

Many of our clients utilise our vendor inventory management system, we can streamline your stock handling processes, with regular onsite stock takes, reserve stock on indent items, site audit on key components and spares sourcing; our competitive prices and industry know how all come together to form the Mastermac advantage!





# Vacuum



**Venturi vacuum pumps**



**Modular vacuum cups**



**FDA approved  
Metal detectable cups**



**Decentralised ejectors**



**Stackable / configurable  
Ejectors**



**Multibellow cups  
Flat cups**



**Vacuum filters**



**PMAT modular mounting  
systems**



**Vacuum accessories  
PiSAVE - PiSENSE  
Vacuum check valves**



**Vacuum switches / gauges**



**Level compensators**



**Vacuum conveyors**



**Vaculex material  
handling systems**



**KENOS gripper  
systems**



**Oakham bag sealers  
New units/ spares**



**Electromechanical pumps**



# Compressed Air



**Compressors  
Dryers  
Filtration**



**Poly pipe  
Ring main install  
Poly fittings**



**Electro-pneumatic  
Reed switches  
Pressure switches**



**Rodless actuators**



**Iso actuators  
Imperial actuators**



**Compact actuators  
Rotary actuators**



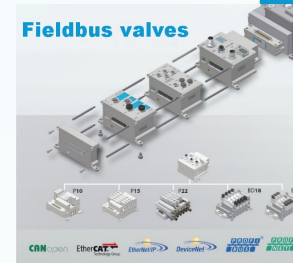
**Actuator mounts**



**Filters  
Regulators  
Lubricators  
Safety dump valves**

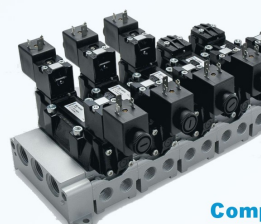


**Poppet valves**



**Fieldbus valves**

**Sub-base valves**



**Mechanical valves**

**Solenoid valves**

**Compression fittings**

**Claw and cam-lok adaptors**



**Push in fittings**

**Pneumatic tube**



**Airtools  
Blow guns**



**Brass and stainless  
adaptor fittings**



**Couplings**



# Process solutions



**Solenoid diaphragm valves**



**Pneumatic Actuated**



**Electric Actuated**



**Sanitary valves**



**Butterfly valves**



**Check valves**



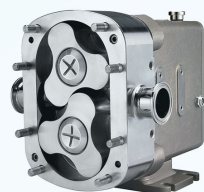
**Ball valves  
2 or 3 piece**



**Chemical resistant valves**



**Steam traps**



**Lobe pumps**



**Open impeller centrifugal**



**Pressure relief valves**



**Filtration  
Y strainers**



**Submersible pumps**



**Rotor (mono) pumps**

**Air operated double diaphragm pumps**



# Mechanical



**IEC electric motors**



**Mining spec  
Electric motors**



**Stainless steel motors**



**Gearboxes  
Helical  
Wormdrive  
Planetary**



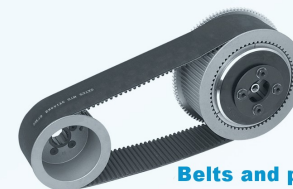
**Air brakes and clutches**



**Air motors**



**Shock absorbers**



**Belts and pulleys**



**Taper lock bushes**



**Chain and sprockets**



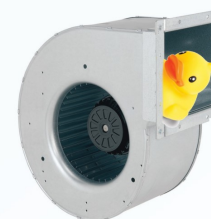
**Bearings**



**Bearing blocks**



**Couplings**



**Air movement  
Fans  
Blowers**



**YES! We do hydraulics too!**

